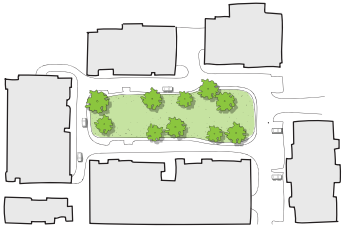


AUDRC Research Note

High Life: Apartment communal open space review

1. Park



2. Setback garden



3. Courtyard garden



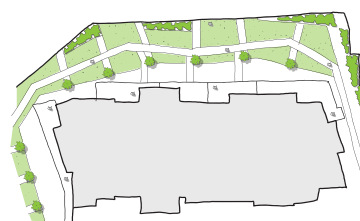
4. Urban space



5. Podium courtyard



6. Podium terrace



7. Roof terrace



What types of communal open spaces do apartment residents use most?

Background

- There is a consensus that higher-density urban settings need to be accompanied by communal outdoor space to bolster the well-being of apartment residents.
 - Nonetheless, there is a lack of studies identifying communal outdoor space types in apartment buildings and systematically assessing the degree to which they provide greenery and are used by residents.
 - In response, this study developed a communal outdoor space typology for apartment buildings in Australian cities, measured the degree to which each communal outdoor space type provides access to greenery, and examined which types received the most frequent visitation via a resident survey (975 responses). The communal outdoor space types were Park, Setback Garden, Courtyard Garden, Urban Space, Podium Courtyard, Podium Terrace and Roof Terrace.
- ### Key findings
- Results show that some dominant communal outdoor space typologies provide scant access to greenery and are underutilised. For instance, the Podium Terrace and Roof Terrace types only contained 24 and 8% vegetated areas, with the remainder hard surfaces.
 - Moreover, the Podium Terrace and Roof Terrace types typically have no substantial trees. Conversely, ground floor types such as Parks and Setback Gardens contained 51 and 53% planted area, respectively and significant numbers of trees.

- This situation is concerning and represents missed opportunities for health promotion, given the documented importance of greenery in communal outdoor space for resident health, well-being and sociability.
- There is a potential mismatch between the delivered communal outdoor space and what residents prefer. For example, whilst the park typology was rarely delivered, it was associated with the highest levels of frequent use. Conversely, while the Roof Terrace typology was commonly available, it was associated with the lowest levels of regular use.
- Policy requirements that target specific communal outdoor space types could elevate their naturalness and increase use.

Links to related publications

Bolleter, J., Hooper, P., Kleeman, A., Edwards, N., & Foster, S. (2024). A typological study of the provision and use of communal outdoor space in Australian apartment developments. *Landscape and Urban Planning*, 246(105040), 1-14. <https://doi.org/10.1016/j.landurbplan.2024.105040>

Contact

For further information, publications, media, and presentation opportunities on this communal open space research, please get in touch with Dr Julian Bolleter at julian.bolleter@uwa.edu.au.

For more information on the High Life project, please get in touch with Dr Sarah Foster, sarah.foster@rmit.edu.au