

BUSINESS AS *Unusual*

student ideas
competition

imagining a future Australian city

Tell us about your future city.

1. What is the name of your city?

Transit City

2. Where is your city located?

Transit City is located in Port Augusta, South Australia. The future city centre, which is the main arrival point for those travelling by high-speed rail from other major cities, will be located where the current one is, on the Spencer Gulf's eastern side. However, much of the future city will grow beyond this area, parallel to the water body and on the Gulf's western side.

Geospatial coordinates of city centre: -32.49, 137.77

3. What is the ideal population of your city?

1500000

4. What is the impetus behind your city?

The modern nation of Australia is largely founded on a migrant population. Going into the future, we will continue to rely upon this pattern to sustain our economy. So far, Australia has been largely selective of who it welcomes, its intake made up mostly of skilled migrants. On the other hand, its refugee and humanitarian intakes are much lower. This can't remain the case going into the future. The number of cross-border migration is increasing across the world, particularly due to political conflicts and the slow-onset of climate change. Australia will be required to step up and provide refuge for more people than what it's doing now and expand its migration policy to become more inclusive. Transit City, a charter city, will support the migrants' initial settling-in journey (i.e. a temporary stay of varied time-spans, depending on the individual's support & needs) before they move on to a new town/city they will call home. The city also has potential to provide a more humane solution to lifeless detention and offshore processing centres. With its own governing system, the city will be able to respond more promptly to the diverse needs of new migrants and represent their voices in decision-making. The city invests in migrants' well-being and recognises each individual's ability to make Australia a better place.

Port Augusta is an ideal location because:

- its strategic location and existing train infrastructure connecting eastern and western Australia allows for easier distribution of new immigrant population across the country, especially regional towns that require a population boost.
- as a major service hub in the region, there's lots of potential to develop more industries and increase career pathways for new migrants (e.g. education, renewable energy, tourism, hospitality, manufacturing, marine studies).
- Port access will assist in the distribution of goods.
- the location's temperature will be ideal for living in the next century.

5. Describe the design of the city.

URBAN FORM & TECHNOLOGY

To respond to the constantly changing and temporary population, the new city is structured in a grid. Freight networks run on this grid to assist in sculpting the urban landscapes and insert or remove interventions onto flexible metal structures. The grid only provides a framework however, while still encouraging the city to grow organically and allowing residents to add their own personality to the city. The urban form is compact and controlled by the airport to the west, water bodies to the south and work and train yards to the north. The grid is divided into precincts, each with its own data collection and processing centre on human activities and changes that take place in the area.

SUSTAINABLE LIVING

On arrival, residents are given a housing unit that they can customise and build onto. They can choose where to reside in the new city. Once their temporary stay is over, they will choose whether to bring their with them. If not, it will be dismantled or repurposed to house new residents.

LAND USE

Essential services, commercial areas and other non-residential land uses are located close to transit corridors for easy access. Beyond community green spaces, green corridors located along tram lines provide an escape from density and serve as way-finders.

INFRASTRUCTURE

The city will be mostly car-free & private transport limited for service functions. Residents get around the city by train, trams & active transport such as electric bikes etc.

6. How does your city embody an alternative Australian dream?

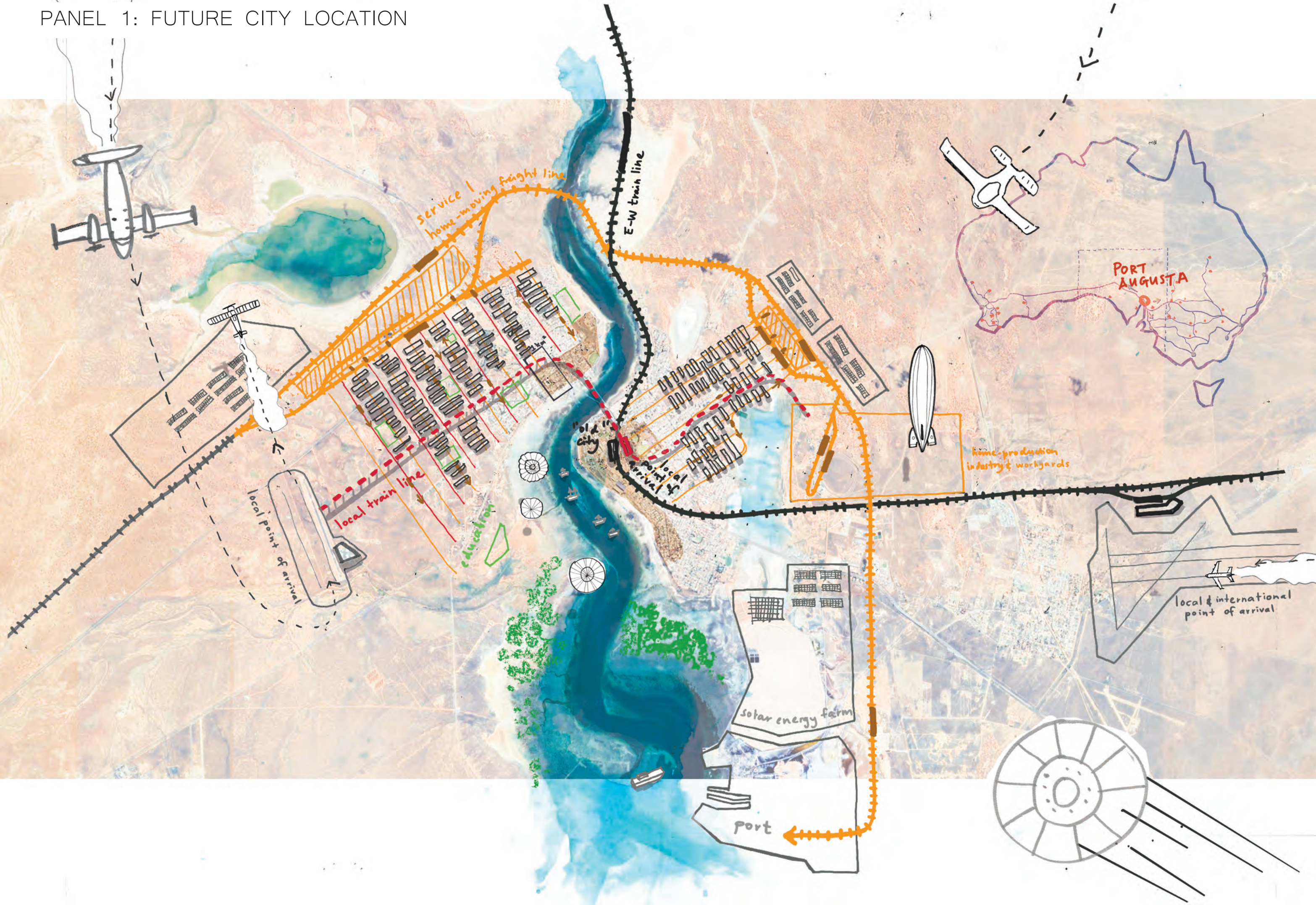
Transit City envisions a dream where migrants, regardless of their cultural or socio-economic background, are given the best opportunity to establish a new life in Australia. This is not only by providing social and economic support but also by integrating new residents into "normal" everyday life, give them opportunities to be part of and contribute to communities, explore various job pathways and interests, gain education and qualification for previous experiences, and reconnect with previously separated relatives and friends.

The city is not solely for new migrants. Australian citizens can also come to visit, work and live here. By opening the city up to other Australians, it allows for new migrants and Australian citizens to form social networks and learn about each other's cultures. The migrants themselves are also able to leave the city and visit other towns and cities, whether for leisure or work purposes such as internship and training in a different city; they would require a special pass which would be registered on a system to regulate movement, ensure safety and protect agreement of special considerations that have been bestowed upon them and agreed upon between the Australian and Transit City's governments.

During their stay in the city, residents will attend workshops, schools or universities to develop language, cultural and technical skills. The Australian government, in collaboration with Transit City, may also provide incentives for migrants to pursue certain courses to address job shortages in the country. Private companies are also able to invest in job training for applicants of choice.

Despite the prevalence use of technology in the city to monitor and collect data, face-to-face interaction is still valued and highly prioritised. Robots and AI take up the more mundane tasks of keeping the city clean and functioning. However, activities involving value-based interaction between individuals are conducted in person wherever possible, such as in educational and service settings, to help foster belonging and sense of place among new migrants. The city provides various types of climate-suitable outdoor spaces to encourage outdoor activities and social events for residents to join and engage with members of the community. Residents are also encouraged to join or form their own community groups and organise their own events or volunteer their time for the community.

PANEL 1: FUTURE CITY LOCATION



PANEL 2: 1 KM2 PRECINCT

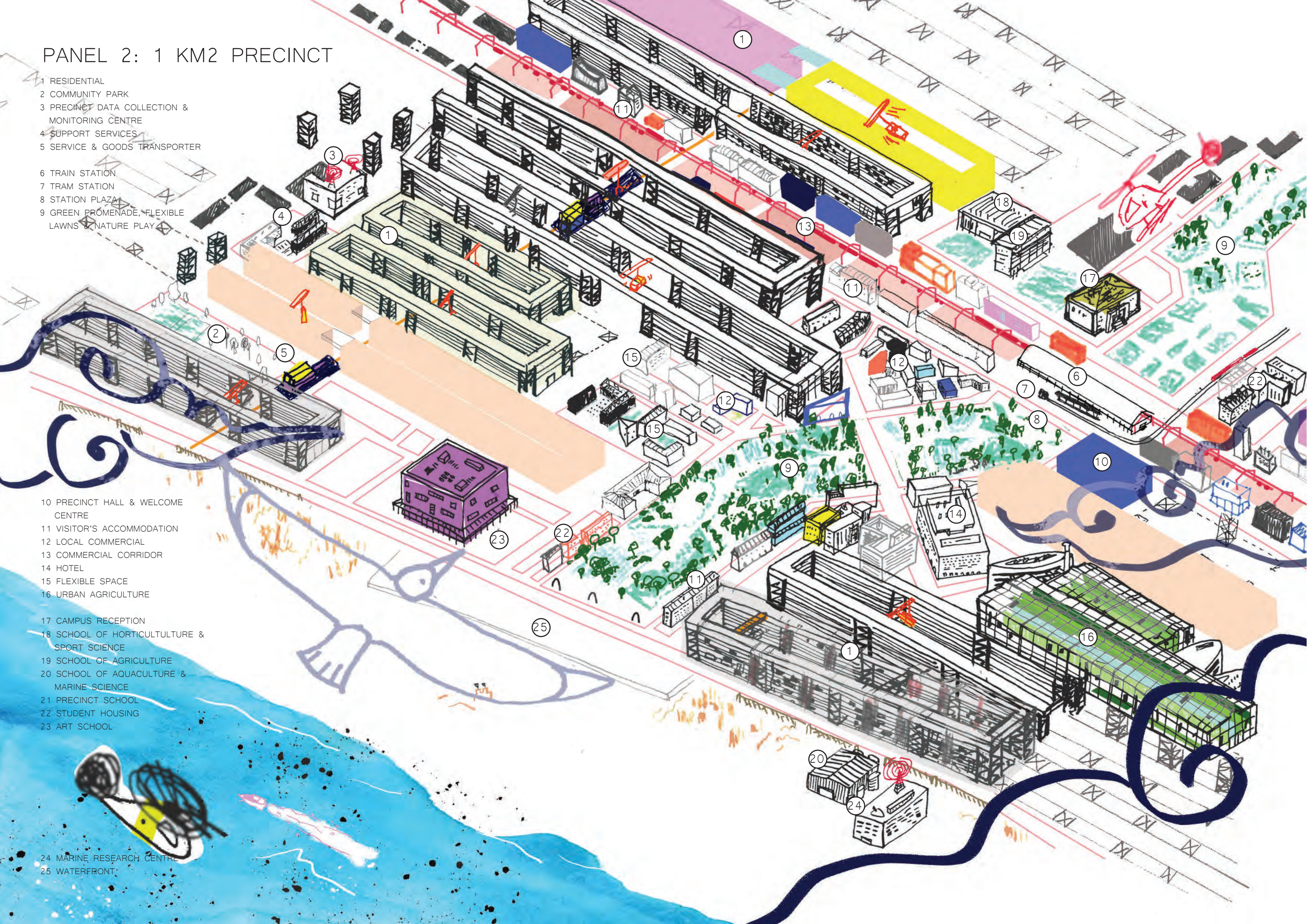
- 1 RESIDENTIAL
- 2 COMMUNITY PARK
- 3 PRECINCT DATA COLLECTION & MONITORING CENTRE
- 4 SUPPORT SERVICES
- 5 SERVICE & GOODS TRANSPORTER

- 6 TRAIN STATION
- 7 TRAM STATION
- 8 STATION PLAZA
- 9 GREEN PROMENADE, FLEXIBLE LAWNS & NATURE PLAY

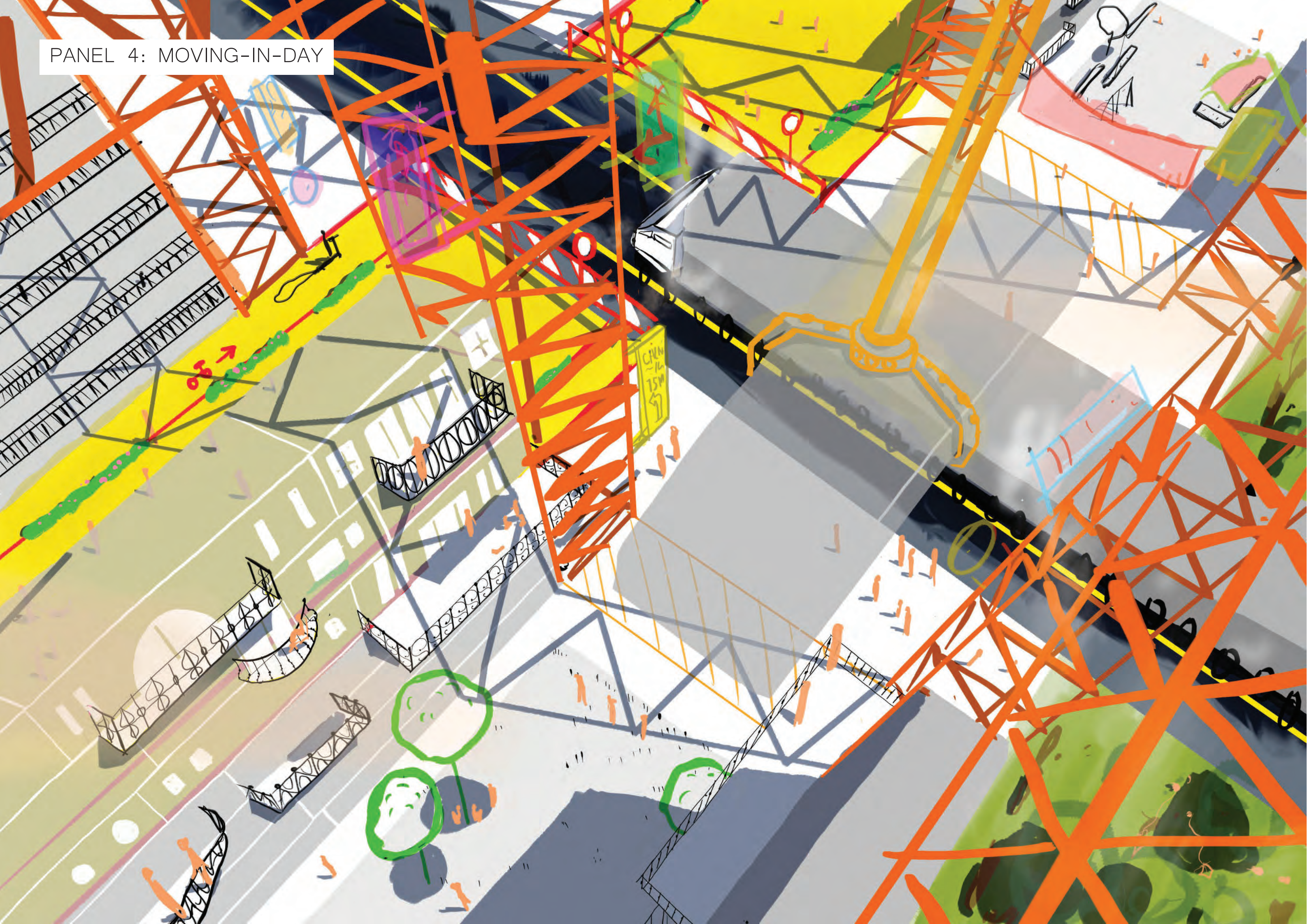
- 10 PRECINCT HALL & WELCOME CENTRE
- 11 VISITOR'S ACCOMMODATION
- 12 LOCAL COMMERCIAL
- 13 COMMERCIAL CORRIDOR
- 14 HOTEL
- 15 FLEXIBLE SPACE
- 16 URBAN AGRICULTURE

- 17 CAMPUS RECEPTION
- 18 SCHOOL OF HORTICULTURE & SPORT SCIENCE
- 19 SCHOOL OF AGRICULTURE
- 20 SCHOOL OF AQUACULTURE & MARINE SCIENCE
- 21 PRECINCT SCHOOL
- 22 STUDENT HOUSING
- 23 ART SCHOOL

- 24 MARINE RESEARCH CENTRE
- 25 WATERFRONT



PANEL 4: MOVING-IN-DAY



PANEL 3: TRANSIT CORRIDOR

